

112' x 68' Classroom

Building Details:

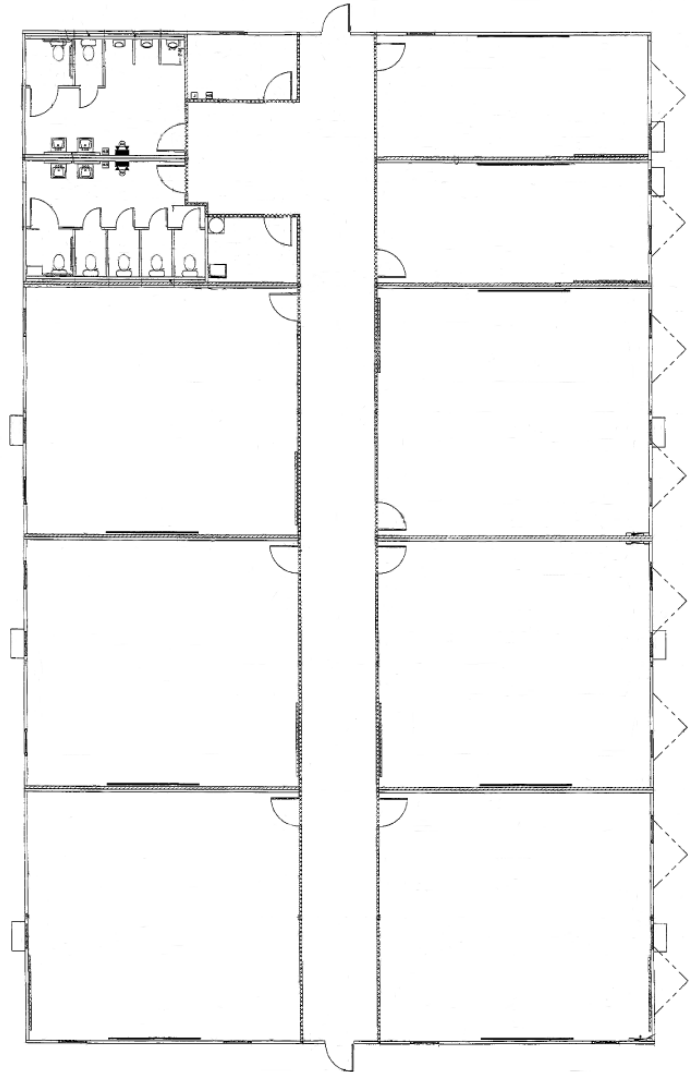
Asset #: CR00104, 105
State Seal: NC, VA
Building Size: 112 x 68
Square Footage: 7616
Occupancy: E - Education
Roof Load: 20 PSF
Wind Load: 90 MPH
Floor Load: 40 PSF, 100 PSF (Corridor)
Electrical: Single Phase / 200 AMP Panel / 120/240 Volts

Exterior Details:

Siding Material: Vinyl Lap
Roofing Material: .045 EPDM
Frame: Outrigger
Doors: (2) Single
Windows: (16)
HVAC: (7) 3 Ton / 10 kw Heat Strip
(1) 2 Ton / 10 kw Heat Strip

Interior Details:

Wall Finish: Vinyl Covered Gypsum
Floor Finish: Block Tile
Lighting: Fluorescent
Ceiling: Hard (Popcorn)
Restrooms: (2) Multi-Stall
Additional Features: (8) Markerboards, (8) Tackboards



**This building is subject to availability. The details provided are for informational purposes only and are not guaranteed. For detailed specifications, drawings and pricing contact your local representative.