

24' x 32' Classroom

Building Details:

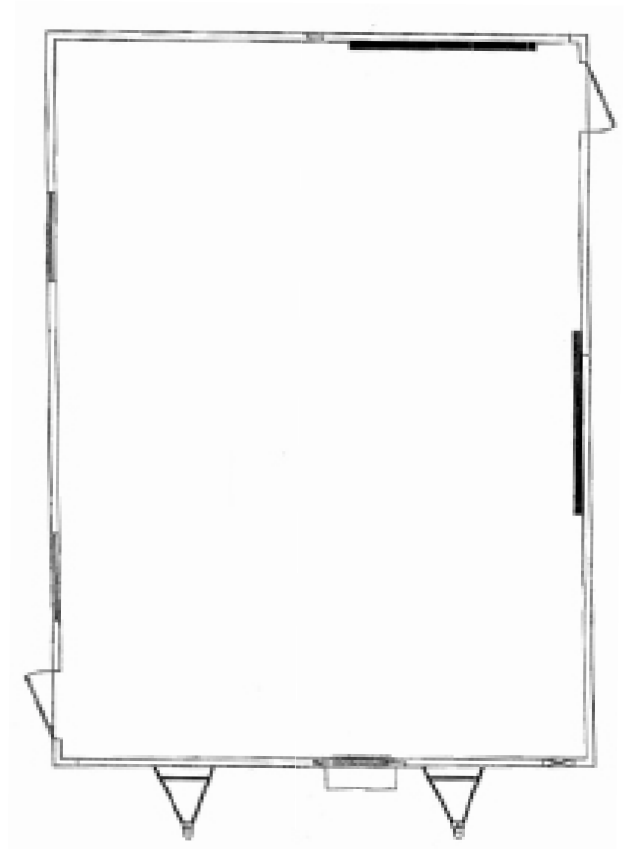
Asset #: CR00026-36
State Seal: NC
Building Size: 24 x 32
Square Footage: 768
Occupancy: E - Education
Roof Load: 20 PSF
Wind Load: 110 MPH
Floor Load: 40 PSF
Electrical: Single Phase / 100 AMP Panel / 120/240 Volts

Exterior Details:

Siding Material: .019 Aluminum
Roofing Material: 30 Gauge Galvanized Metal
Frame: Outrigger
Doors: (2) Single
Windows: (2) Horizontal Slide
HVAC: (1) 3 Ton / 10 kw Heat Strip

Interior Details:

Wall Finish: Vinyl Covered Gypsum
Floor Finish: Carpet
Lighting: Fluorescent
Ceiling: Hard (Seaspray)
Additional Feature: Markerboard



**This building is subject to availability. The details provided are for informational purposes only and are not guaranteed. For detailed specifications, drawings and pricing contact your local representative.