

24' x 36' Classroom

Building Details:

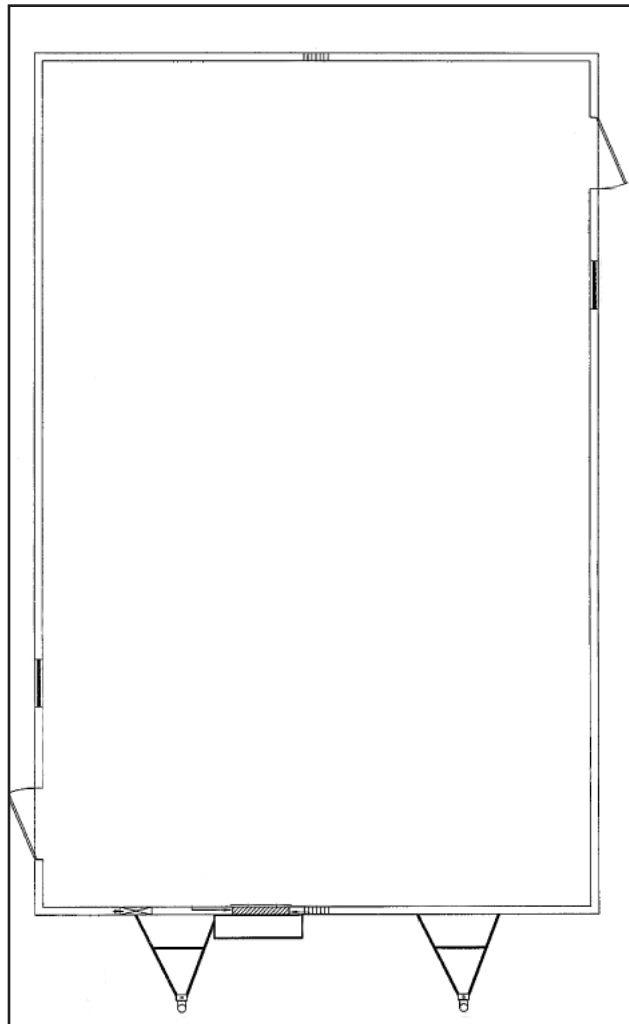
Asset #: CR00040
Building Size: 24 x 36
Square Footage: 864
Occupancy: E - Education
Roof Load: 20 PSF
Wind Load: 130 MPH
Floor Load: 40 PSF
Electrical: Single Phase / 100 AMP Panel / 120/240 Volts

Exterior Details:

Siding Material: .019 Aluminum
Roofing Material: 30 Gauge Galvanized Metal
Frame: Outrigger
Doors: (2) Single
Windows: (2) 24 x 54
HVAC: (1) 3 Ton / 10 kw Heat Strip

Interior Details:

Wall Finish: Vinyl Covered Gypsum
Floor Finish: Carpet
Lighting: Fluorescent
Ceiling: Hard (Seaspray)
Additional Features: Chalkboard, Tackboard



**This building is subject to availability. The details provided are for informational purposes only and are not guaranteed. For detailed specifications, drawings and pricing contact your local representative.

Contact:

Toll-free 877.677.2231
Phone: 732.223.4407
Fax: 732.223.4458
Email: sales@mSPACEholdings.com

The M|SPACE Promise

You'll receive more industry expertise, more personal attention, and more financing options from M SPACE than from any other modular space company.