

# 24' x 42' Classroom

## Building Details:

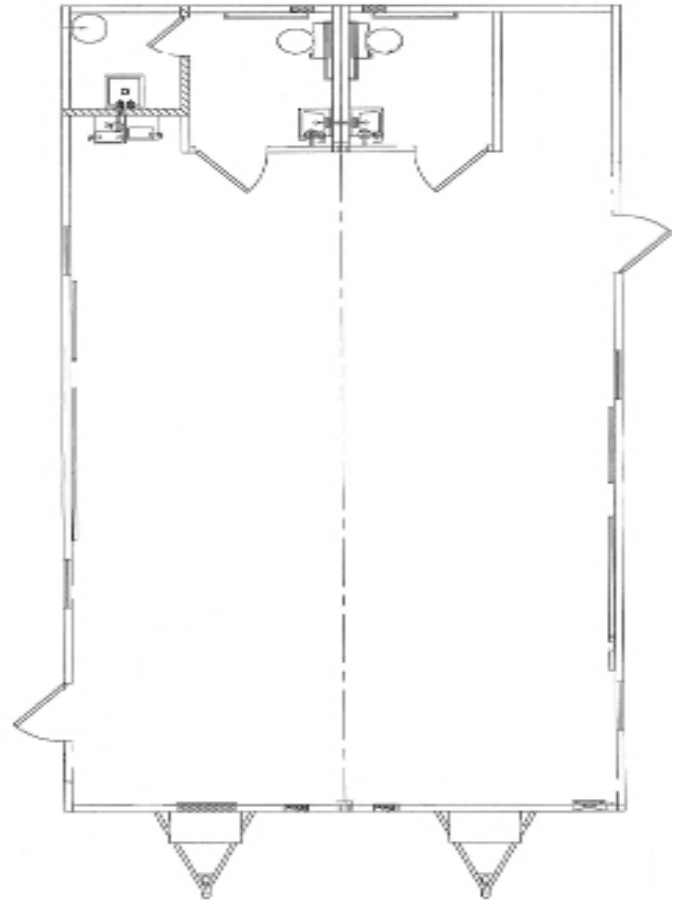
Asset #: CR00402-412  
Building Size: 24 x 42  
Square Footage: 1008  
Occupancy: E - Education  
Roof Load: 20 PSF  
Wind Load: 90 PSF  
Floor Load: 40 PSF  
Electrical: Single Phase/ 130 AMP/ 120/240 Volts

## Exterior Details:

Siding Material: .019 Aluminum  
Roofing Material: .045 EPDM  
Frame: Outrigger  
Doors: (2) Single  
Windows: (4) 30"x 54" Vertical Slide  
HVAC: (2) 2 ton/ 10 KW Heat Strip

## Interior Details:

Wall Finish: Vinyl Covered Gypsum  
Floor Finish: Vinyl Covered Tile  
Lighting: 240 Surface Mount  
Ceiling: Hard (popcorn)  
Restroom: (2) Single Stall



\*\*This building is subject to availability. The details provided are for informational purposes only and are not guaranteed. For detailed specifications, drawings and pricing contact your local representative.