

24' x 36' Classroom

Building Details:

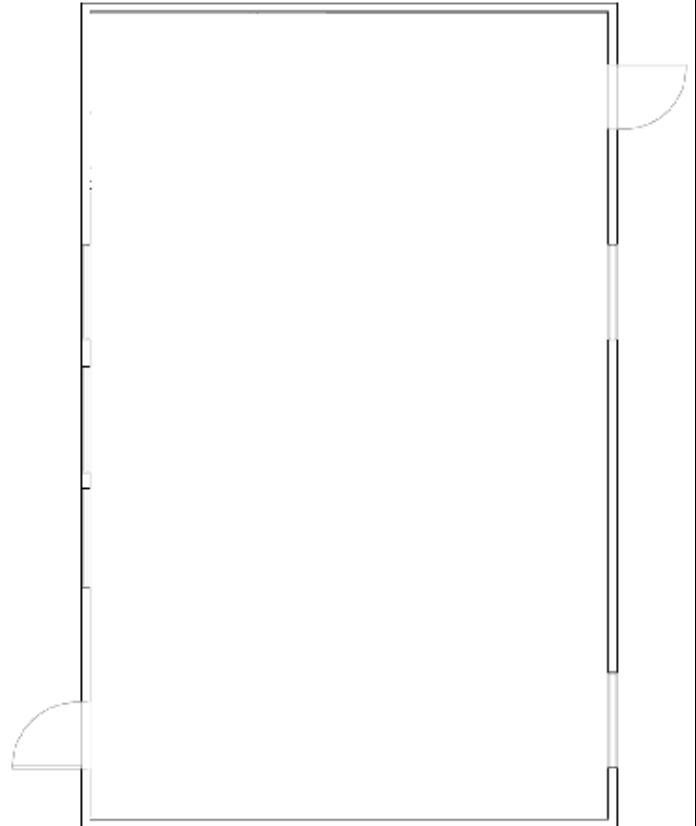
Asset #: FLST- D
Building Size: 24 x 36
Square Footage: 864
Occupancy: E - Education
Roof Load: 20 PSF
Wind Load: 140 MPH
Floor Load: 40 PSF
Electrical: Single Phase / 125 AMP Panel / 120/240 Volts

Exterior Details:

Siding Material: High Rib Steel
Roofing Material: .045 EPDM
Frame: Perimeter
Doors: (2) Single
Windows: (5) 46 X 80 Vertical Slide
HVAC: (1) 3.5 Ton / 10 kw Heat Strip

Interior Details:

Wall Finish: Vinyl Covered Gypsum
Floor Finish: Carpet/Seamless Sheet Vinyl
Lighting: Fluorescent
Ceiling: T-Grid
Additional Features: Markerboards, Tackboards



**This building is subject to availability. The details provided are for informational purposes only and are not guaranteed. For detailed specifications, drawings and pricing contact your local representative.