

# 24' x 36' Classroom

## Building Details:

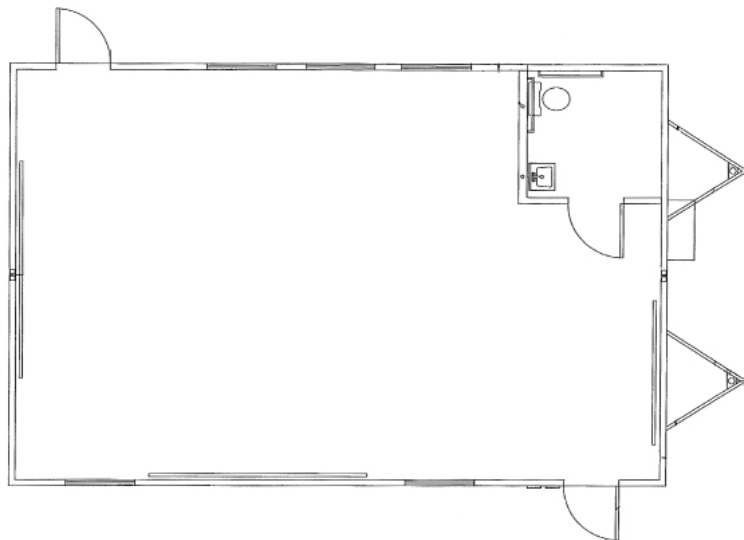
Asset #: FLST-W  
State Seal: FL  
Building Size: 24 x 36  
Square Footage: 864  
Occupancy: E - Education  
Roof Load: 20 PSF  
Wind Load: 140 MPH  
Floor Load: 40 PSF  
Electrical: Single Phase / 125 AMP Panel / 120/240 Volts

## Exterior Details:

Siding Material: High Rib Steel  
Roofing Material: .045 EPDM  
Frame: Perimeter  
Doors: (2) Single  
Windows: (5) 46 x 53 Vertical Slide  
HVAC: (1) 3.5 Ton / 10 kw Heat Strip

## Interior Details:

Wall Finish: Vinyl Covered Gypsum  
Floor Finish: Carpet  
Lighting: Fluorescent  
Ceiling: T-Grid  
Restroom: (1) Single Stall  
Additional Features: (2) Markerboards , (1) Tackboard



\*\*This building is subject to availability. The details provided are for informational purposes only and are not guaranteed. For detailed specifications, drawings and pricing contact your local representative.