



Type: Office
Quantity: One
Number: MO00013 (A)

Building Details

Seal: PA
Size: 132' x 60' Clear Span
Square Footage: 7920
Occupancy: B - Business
Roof Load: 30 PSF
Wind Load: 90 MPH
Floor Load: 50 PSF
Electric: 3 phase / (11) Panels (Various AMPs)
110/208 Volts

Exterior Details

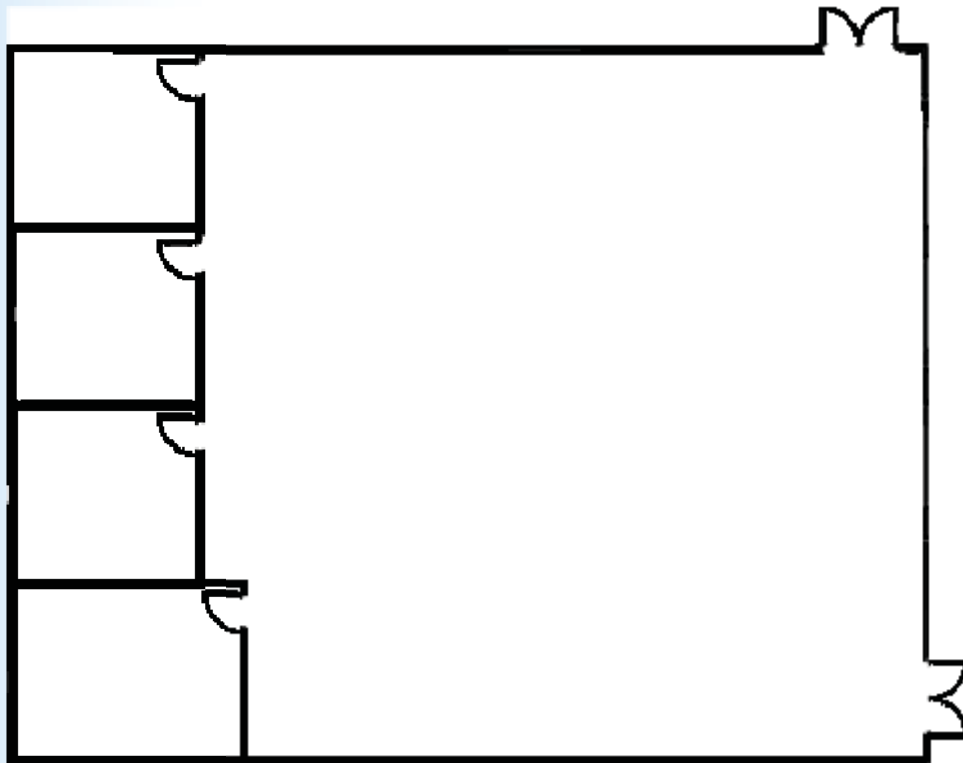
Siding: Dura Temp
4" on Center Grooves
Roof: .045 EPDM
Frame: Perimeter
Windows: 24" x 52"
Doors: (2) Double
HVAC: (3) 8.5 Ton / 36 kw Heat Strip
Roof Mount

Interior Details

Wall Finish: Vinyl Covered Gypsum
Flooring: Carpet
Lighting: Fluorescent
Restrooms: None
Ceiling: T-Grid



Type: Office
Quantity: One
Number: MO00013 A-3
Size: 48' x 64' Clear Span
Square Footage: 3072



Doors and Windows will be configured based on customer's needs.