



**Type: Office**  
**Quantity: One**  
**Number: MO00013 (B)**

### Building Details

Seal: PA  
Size: 192' x 60' Clear Span  
Square Footage: 11,520  
Occupancy: B - Business  
Roof Load: 30 PSF  
Wind Load: 90 MPH  
Floor Load: 50 PSF  
Electric: 3 phase / (16) Panels (Various AMPs)  
110/208 Volts

### Exterior Details

Siding: Dura Temp  
4" on Center Grooves  
Roof: .045 EPDM  
Frame: Perimeter  
Windows: 24" x 52"  
Doors: (2) Double (1) Single  
HVAC: (4) 8.5 Ton / 36 kw Heat Strip  
Roof Mount

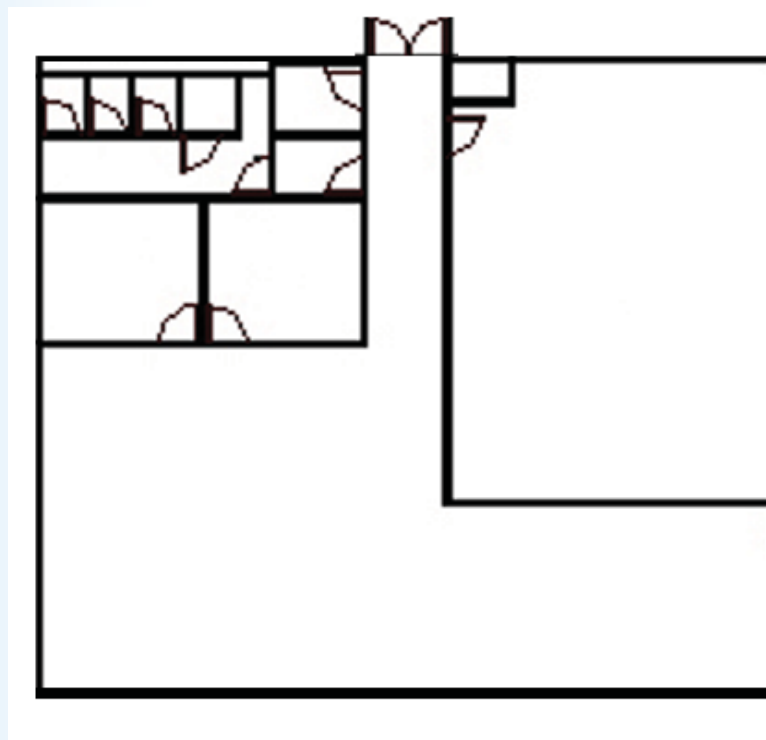
### Interior Details

Wall Finish: Vinyl Covered Gypsum  
Flooring: Carpet  
Lighting: Fluorescent  
Restrooms: Two Multi-Stall  
Ceiling: T-Grid





**Type:** Office  
**Quantity:** 1  
**Number:** MO00013 B-2  
**Size:** 48' x 64'  
**Square Footage:** 3072



**Doors and Windows will be configured based on customers needs.**