

56' x 68' Classroom

Building Details:

Asset #: CR00103
State Seal: NC
Building Size: 56 x 68
Square Footage: 3808
Occupancy: E - Education
Roof Load: 30 PSF
Wind Load: 90 MPH
Floor Load: 100 PSF Corridor, 40 PSF Elsewhere
Electrical: Single Phase / 200 AMP / 120/240 Volts



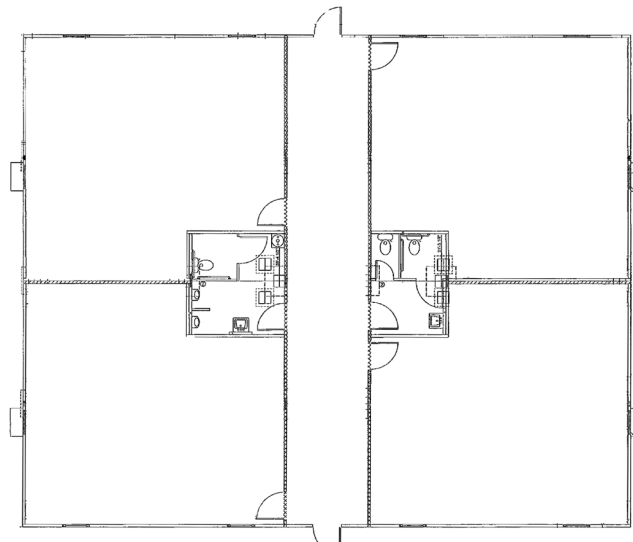
Exterior Details:

Siding Material: Vinyl Lap
Roofing Material: .45 EPDM
Frame: Outrigger
Doors: (2) Single
Windows: (8) Vertical Sliders
HVAC: (4) 3 Ton / 10 kw Heat Strip



Interior Details:

Wall Finish: Vinyl Covered Gypsum
Floor Finish: 1/6" Block Tile
Lighting: CPF 240 Fluroscnt
Ceiling: Gypsum with Popcorn Finish
Restroom: (4) ADA



**This building is subject to availability. The details provided are for informational purposes only and are not guaranteed. For detailed specifications, drawings and pricing contact your local representative.