

28' x 40' Classroom

Building Details:

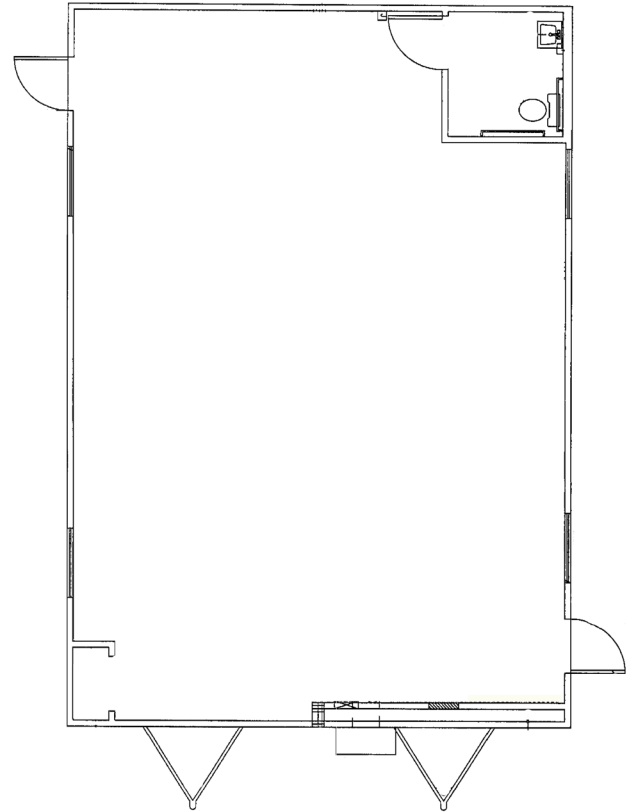
Asset #: CR00266-267
State Seal: FL, MS, GA
Building Size: 28 x 40
Square Footage: 1120
Occupancy: E - Education
Roof Load: 20 PSF
Wind Load: 140 PSF
Floor Load: 75 PSF
Electrical: Single Phase / 200 AMP Panel / 120 / 240 Volt

Exterior Details:

Siding Material: .019 Aluminum
Roofing Material: Shingles
Frame: Perimeter
Doors: (2) Single
Windows: (4)
HVAC: 4 Ton / 10 kw Heat Strip

Interior Details:

Wall Finish: Vinyl Covered Gypsum
Floor Finish: Vinyl Covered Tile
Lighting: 2 x 4 Troffer
Ceiling: Hard
Restroom: (1) Single



**This building is subject to availability. The details provided are for informational purposes only and are not guaranteed. For detailed specifications, drawings and pricing contact your local representative.